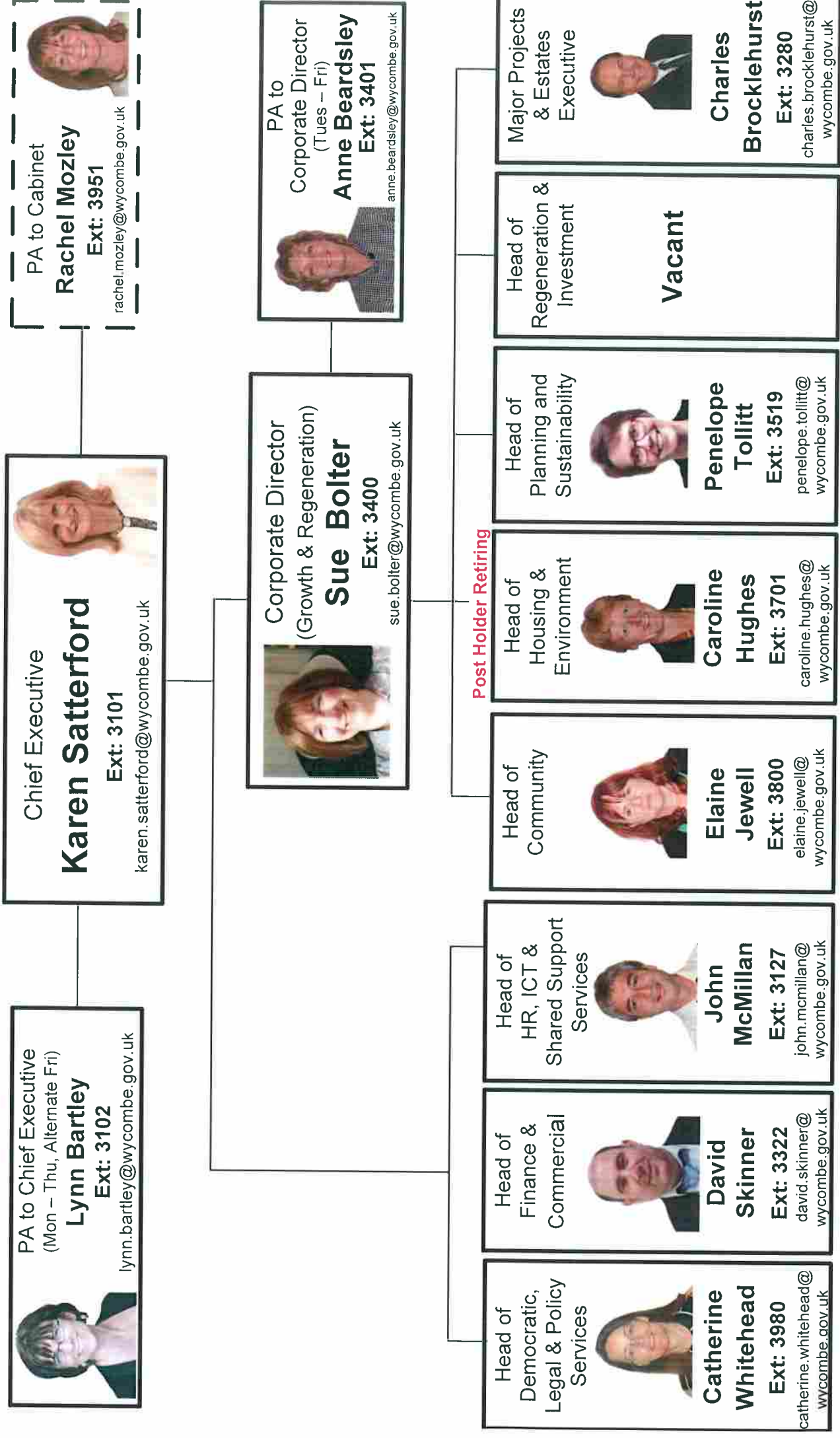


WYCOMBE DISTRICT COUNCIL

Chief Executives / Strategic Management Board (SMB)




PA to Chief Executive
(Mon - Thu, Alternate Fri)
Lynn Bartley
Ext: 3102
lynn.bartley@wycombe.gov.uk



Chief Executive
Karen Satterford
Ext: 3101
karen.satterford@wycombe.gov.uk



PA to Cabinet
Rachel Mozley
Ext: 3951
rachel.mozley@wycombe.gov.uk



Corporate Director
(Growth & Regeneration)
Sue Bolter
Ext: 3400
sue.bolter@wycombe.gov.uk



PA to
Corporate Director
(Tues - Fri)
Anne Beardsley
Ext: 3401
anne.beardsley@wycombe.gov.uk



Head of Democratic, Legal & Policy Services
Catherine Whitehead
Ext: 3980
catherine.whitehead@wycombe.gov.uk



Head of Finance & Commercial
David Skinner
Ext: 3322
david.skinner@wycombe.gov.uk



Head of HR, ICT & Shared Support Services
John McMillan
Ext: 3127
john.mcmillan@wycombe.gov.uk



Head of Community
Elaine Jewell
Ext: 3800
elaine.jewell@wycombe.gov.uk



Head of Housing & Environment
Caroline Hughes
Ext: 3701
caroline.hughes@wycombe.gov.uk



Head of Planning and Sustainability
Penelope Tollitt
Ext: 3519
penelope.tollitt@wycombe.gov.uk



Head of Regeneration & Investment
Vacant

Major Projects & Estates Executive
Charles Brocklehurst
Ext: 3280
charles.brocklehurst@wycombe.gov.uk

